

TYPICAL TEMPLATE – 2nd THRU 8th FLOORS

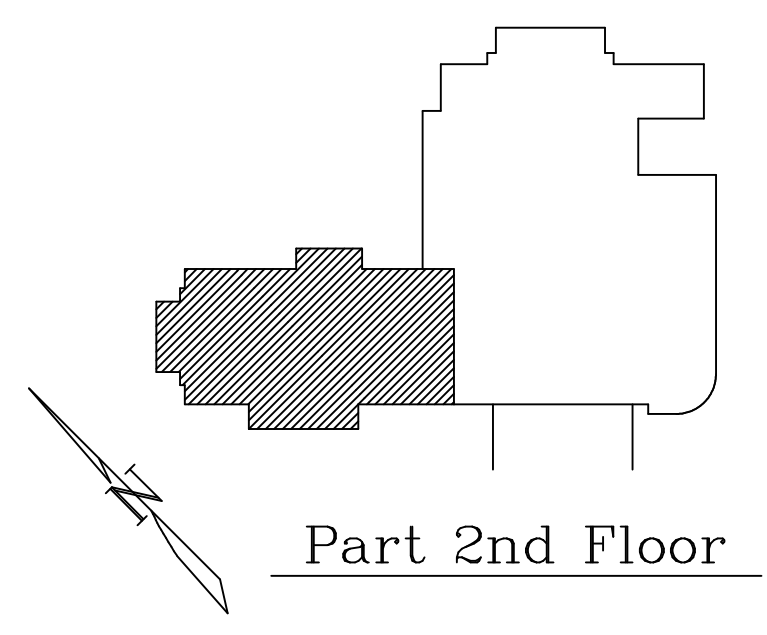
PLACEMENT AS INDICATED ON TEMPLATE DRAWINGS

WASTE, VENT & STORM DRAIN SLEEVE TEMPLATE

2nd Floor ONLY

NOTE:

1. THE GENERAL CONTRACTOR WILL BE RESPONSIBLE FOR ESTABLISHING CONTROL LINES "M" & "8" ON THE TOP OF FORMS AND THEN TRANSFERRING TO THE TOP OF DECK ON EACH FLOOR. IT HAS BEEN AGREED THAT ALL TRADES WILL USE THESE CONTROL LINES FOR THE LAYOUT OF THEIR WORK.
2. DO NOT TAKE ANY DIMENSIONS FROM COLUMN LINES.
3. THE LOCATION OF PLUMBING TEMPLATES IS BASED OFF OF WORKING LINES WHICH ARE THE CENTER OF PIPE ALONG THE NORTH & SOUTH CORRIDOR WALLS AND DIMENSIONS TIED TO CONTROL LINE "8". THE 4" MAIN VENT STACK IS THE LOCATING POINT OF THE TEMPLATE.



Rev. No.	Date	Description
1	2/09/2007	GENERAL REVISIONS